

Texas Society of Professional Engineers **Bexar Chapter**

VOLUME 2011, NUMBER 8

November 2011

From the President's desk....



Thank you to everyone who helped to organize another successful ethics training. Dr. José Weissmann Ph.D., P.E. reflected on several examples of balancing ethics as a part of every day projects. The Bexar Chapter will be making a \$1,000 scholarship donation to the UTSA College of Engineering in appreciation for Dr. Weissmann's presentation and leadership during our training.

Speaking of leadership, the Bexar Chapter would like to congratulate Richard W. Kistner, P.E., F.NSPE who was formally recognized as an NSPE Fellow in 2011. The NSPE Fellow Program recognizes professional engineers who are actively involved in serving the chapter, state and national levels of NSPE and also who demonstrate exemplary service to the profession, the Society, and the community. Mr. Kistner very quietly accepted his certificate during the annual TSPE membership meeting this summer, so many of our members may not know about this very important recognition. I do know that Mr. Kistner is a big supporter of the Political Action Committee for Engineers. So, I'm going to give him the opportunity to "pass the PACE hat" at our next meeting. Don't forget your check-book.

We will be back at the Barn Door on November 7th for our next regular membership meeting. Our guest speaker will be Lizette Colbert, P.E. with TxDOT. I look forward to seeing you there.

Sincerely,

Shauna Weaver, P.E.
TSPE Bexar Chapter President

**2011-2012 BEXAR CHAPTER TSPE
OFFICERS AND DIRECTORS**

CHAPTER MEETING

| | | |
|------------------------------------|---------------------------|--------------|
| President | Shauna Weaver, P.E. | 210-375-9000 |
| Past President | E. Allen Dunn, III, P.E. | 830-228-5446 |
| President Elect | Davy Beicker, P.E. | 210-824-2908 |
| Vice President | Lori Dullnig-Warlen, P.E. | 210-494-7223 |
| Secretary | Jesse Guerra, P.E. | 210-233-3843 |
| Treasurer | Ian Perez, P.E. | 210-699-9090 |
| State Director | Mike Coyle, P.E. | 210-691-8434 |
| UTSA Student President | Vacant | |
| Director 1 | Shaun Condor, P.E. | 210-233-3410 |
| Newsletter/Advertising | Brooke Shelton, E.I.T. | 210-375-9000 |
| Legislative and Government Affairs | Dawn Green, P.E. | 210-798-1895 |
| Webmaster | Garry Ford, P.E. | 210-393-3041 |
| Director 2 (A) | Carlos Sanchez, P.E. | 210-349-2277 |
| Scholarships | Fernando Salazar, P.E. | 210-541-1950 |
| Education (ETC, Science Fair) | Alan Esquerria, E.I.T. | 210-541-1945 |
| Director 2 (B) | Thomas Hurst, E.I.T. | 210-641-9999 |
| Mathcounts | Laura Force, P.E. | 210-296-9227 |
| Director 3 (A) | Becky Carroll, P.E. | 210-375-9000 |
| Membership | Bryan, Heiner, P.E. | 210-375-9000 |
| Director 3 (B) | Miyung Squires, P.E. | 210-298-5298 |
| Engineer's Week | Steven Gonzales | 210-826-4611 |
| Young Engineer of the Year | Kara Heasley, P.E. | 210-349-3271 |
| Engineer of the Year | Ray Pinnell, Jr., P.E. | |
| Director 6 (PEG) | Vacant | |
| Director 7 (PEPP) | Frosty Forster | 210-771-5721 |
| Executive Director | Diane Hoskins, C.I.C. | 210-862-8300 |

NOVEMBER CHAPTER LUNCH MEETING

SUBJECT: “Regionalization and Consultant Selection and Management Process”

SPEAKER: Lizette J. Colbert, P.E.

DATE: November 7, 2011

TIME: Registration: 11:30 am -12:00 pm
General Meeting 12:00 pm - 1 pm

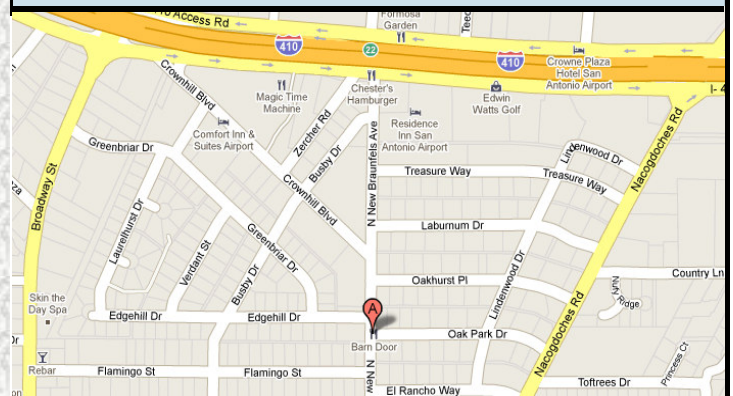
LOCATION: Barn Door Restaurant
8400 N. New Braunfels Ave
San Antonio, TX 78209

COST: \$20 member w/Reservation
\$25 nonmember w/Reservation

RSVP: Deadline: Nov. 4 by 3 p.m.
No shows are responsible for payment

CONTACT: RSVP required online at www.bexartspe.org
Reservations and online payments are currently open and will close at 3 p.m. on November 4, 2011

NOTE: 1.0 PDH meets continuing education renewal of PE license.



NOVEMBER NEWSLETTER

OCTOBER EVENTS

November 7, 2011
Chapter Board Meeting
10:30 am
Barn Door Restaurant

November 7, 2011
Chapter Lunch Meeting
12 pm
Barn Door Restaurant

ADVERTISEMENT

CRANE ENGINEERING



CIVIL • GIS • HYDROLOGY
LAND DEVELOPMENT
PUBLIC WORKS

500 N. Loop 1604 E Phone (210) 402-2944
San Antonio, TX paul-crane@sbeglobal.net

www.craneengineering.us

New Members

The Bexar Chapter of TSPE welcomed the following new members:

- Lyn Homes, P.E.
- Carmen Groth
- Paul Zohlen, P.E.
- Emily Gillham, E.I.T.
- Alan Esguerra, E.I.T.

“Post Your Business Card Here”

Price is \$200 per election period
That is a total of nine newsletter publications
Please contact Brooke Shelton, E.I.T. for details
bshelton@pape-dawson.com

“Post Your Engineering Related Article Here”

It is **FREE** and you might receive **PDH time** for it!!!
Please contact Brooke Shelton, E.I.T. for details
bshelton@pape-dawson.com
November Newsletter Deadlines: November 16



BEXAR TSPE WEBPAGE

The TSPE Bexar Chapter webpage is online. Our web address is www.bexartspe.org. The webpage has important chapter information including an officer list and calendar of upcoming events!

NOVEMBER NEWSLETTER

Date: November 7, 2011

Registration: 11:30 a.m. — 12:00 p.m.

Presentation: 12 p.m. — 1 p.m.

LOCATION:

Barn Door Restaurant
8400 N. New Braunfels
San Antonio, TX 78209

CONTACT:

RSVP required online at
www.bexartspe.org

CHAPTER LUNCH MEETING

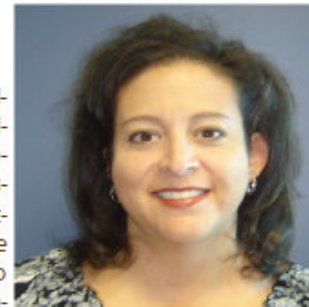


Texas Society of Professional Engineers
Bexar Chapter

**“Regionalization and Consultant
Selection and Management Process”**

This presentation discusses the changes that regionalization has brought and how we are able to better team with our consultant partners.

Guest Speaker:
Lizette J. Colbert, P.E.



Lizette graduated from Texas A&M University in 1998 with a Bachelors of Science in Civil Engineering. After graduation, Lizette worked for the private industry in San Antonio for 7 years before starting her career at TxDOT. In late 2004, she started working for TxDOT's San Antonio District in the Consultant Contract Management Office and was promoted to Consultant Manager and Supervisor for Central Design in San Antonio in 2007. In 2009, she became the Regional Consultant and Design Resource Manager for the South Region where she has been charged with leading, standardizing, and streamlining the consultant management process for the state.

COST: \$20 member w/Reservation
\$25 nonmember w/Reservation

RSVP: Deadline: November 4, 2011 by 3 p.m.
No shows are responsible for payment

CONTACT: RSVP required online at www.bexartspe.org
Reservations and online payments are currently open
and will close at 3 p.m. on Nov. 4, 2011

NOTE: 1.0 PDH meets ethics continuing education renewal of PE license.

NOVEMBER NEWSLETTER



TSPE Membership... Pass the advantage along.

2011 – 2012 Member Appreciation Program

TSPE appreciates the support from the membership for their encouragement of new members. To show our appreciation, we are rewarding you with gifts.

As a member **YOU** already know the advantage membership has given you.

- Promotion of the profession's image
- Recognition from your peers
- Numerous educational courses
- Variety of idea exchange sessions
- Giving back to the community
- Leadership training
- Advocacy before the Legislature
- Educating your hometown community about the engineering profession
- Encouraging future engineers

We are asking that **YOU** share your enthusiasm and value received from membership with the engineers in your community. Your encouragement to join will increase the strength and service TSPE can provide to you. **TSPE is the only organization representing the interest of all licensed Professional Engineers.**

What's in it for you?

Recruit 10 + new members

The Member who sponsors the most over 10 receives a two night stay at La Mansion Del Rio, San Antonio (\$600 value)

Recruit 10 new members

Free one day Annual Conference, Leadership Conference, or Chapter Seminar registration of your choice

Recruit 9 new members

FREE TSPE (state and chapter) membership dues (\$178.00 value)

Recruit 8 new members

\$30 TSPE Bucks

Recruit 7 new members

\$25 TSPE Bucks

Recruit 6 new members

\$20 TSPE Bucks

Recruit 5 new members

\$15 TSPE Bucks

Recruit 4 new members

\$10 TSPE Bucks

Recruit 2 new members*

FREE NSPE Membership Dues (\$128 value)

Recruit 1 new member

Name on TSPE Website

Each new member sponsored, enters you into a drawing for a \$100 gift certificate.

To receive credit, you must notify the state office each time you recruit a new member. Please e-mail this information to membership@tspe.org or call (512) 472-9286. Prizes are awarded quarterly after new or reinstated member dues are paid in full. **To be eligible for free NSPE Membership Dues, two new members must not have been NSPE members before.* TSPE Bucks can be used at any TSPE state or chapter event as well as to purchase items from the TSPE store. Bucks expire one year after they are awarded.

NOVEMBER NEWSLETTER

Executive Board Minutes

October 3, 2011, CPS Roundhouse (La Villita) Building, San Antonio, Texas 78205

1. Called to order at 10:35 PM by President – Shauna Weaver, PE
2. Officers:
 - President, Shauna Weaver, PE
 - President-Elect, Davy Beicker, PE
 - Vice-President, Lori Dullnig-Warlen, PE
 - Secretary, Jesse R. Guerra, Jr., PE
 - Treasurer, Ian Perez, PE
 - State Director, Mike Coyle, PE
 - Past-President, Allen Dunn, III, PEDirectors:
 - Shaun Condor, PE 1. Newsletter, Advertising, Website, Legis. & Govt. Affairs
 - Carlos Sanchez, PE 2A. Scholarship, Education, Science Fair, Eng. Tech. Challenge
 - **Thomas Hurst, EIT** **2B. Mathcounts**
 - Becky Carroll, PE 3A. Membership
 - **Miyoung Squire, PE** **3B. Engineer's Week, EOY, YEOY**Practice Director Reports:
 - **Diane Hoskins – PEPP**
 - **PEG/PEC/PEI/PEE - Vacant**Other Attendees:
 - : in attendance
 - : absent
3. **September Meeting Minutes** – Jesse indicated that the meeting minutes were approved via email on September 15th.
4. **Communications** – Jesse indicated that there were no communications-related announcements.
5. **Treasurer's Report** – Ian discussed the past month's expenditures and/or income to the budget.
6. **Officer's Report:**
 - Past President Report: Allen Dunn, III, PE*
 - Not present; no report provided.
 - President Report: Shauna Weaver, PE*
 - Leadership Conference September 23-24, 2011 – Shauna reported that several members attended the conference's sessions. Regarding the LG&A session, 3 proposed bills (water dams, sunset bill, and water resources) were discussed. Jennifer McEwan will be approached about help with these bills. Shauna will summarize these issues and write an article for the October newsletter.

Executive Board Meeting Minutes Continued on Pg. 7

NOVEMBER NEWSLETTER

Executive Board Meeting Minutes Continued from Pg. 6

President-Elect Report: Davy Beicker, PE

- Present; nothing to report.

Vice President Report: Lori Dullnig-Warlen, PE

- Reported that next month's meeting topic is TxDOT (SOP for contract work with TxDOT). December's meeting will be held at Morgan's Wonderland. The meeting will include the complex's general manager presenting the facility to the attendants.
- Inquiring with SAWS to have President/CEO Mr. Robert Puente speak at January's meeting. Mentioned that February's meeting will be on CoSA's Bond Program. Joint meeting possible. Reported that March's meeting will more technical in nature (field liability issues). Lori said that she is still looking for a speaker at April's Awards Banquet Meeting.

Secretary Report: Jesse R. Guerra, Jr., PE

- See above ("September Meeting Minutes" and "Communications" Sections).

State Director's Report: Mike Coyle, PE

- TSPE established a 'Past President's' Council; wants all chapters to establish that as well for their institutional knowledge.
- Reported that the Chapter's bylaws were unanimously approved.
- Regarding memberships, Claire will be copied on all new sign-ups. Some copies of the "New Membership" appreciation flyers available.

Director 1: Shaun Condor, PE

- Present; nothing to report.

Director 2A: Carlos Sanchez, PE

- Mentioned that letters will be going out to school districts for February's robotics' competition.

Director 2B: Thomas Hurst, EIT

- Not present; no report provided.

Director 3A: Becky Carroll, PE

- Becky reported that there are currently 431 members; 9 are in a delinquent status, and 57 members have dropped.
- State is initiating a membership drive (if members sign up 2 new engineers, the State dues will be paid for. If 10 or more new members are recruited, a free two-night stay at the La Mansion is awarded).
- Three new TSPE members will be recognized at the next meeting.

Director 3B: Miyoung Squire, PE

- Not present; no report provided.

7. Practice Director Reports:

PEPP Exec. Director: Diane Hoskins

- Not present; no report provided.

PEG/PEC/PEI/PEE:

- These practice divisions are currently vacant.

8. Unfinished Business:

None.

9. New Business:

None.

The meeting was adjourned at 11:45 AM.

NOVEMBER NEWSLETTER

NSPE Fellow Membership Grade

The NSPE Fellow Program is a national program intended to recognize deserving professional engineers who have demonstrated long term professional service at the chapter, state, and national levels of NSPE. The NSPE Board of Directors established the Fellow recognition program to honor those licensed members who have demonstrated exemplary service to the profession, the Society, and the community.

For nomination requirements and application form visit the NSPE website:
www.nspe.org/AboutNSPE/fellowmembershipgrade.html

Deadline for Nominations is February 1, 2012



**National Society of
Professional Engineers®**

NOVEMBER NEWSLETTER

2012 Engineer of the Year

Bexar Chapter TSPE is soliciting nominations for the 2012 Engineer of the Year, who will be honored at our Annual Banquet in February 2012. Nominees are to be licensed Texas Professional Engineers (age 35 or older) and members in good standing with TSPE.

The Engineer of the Year selection committee consists of: Ray Pinnell, Jr., PE, and John A. Brogan, P.E. (retired) and H. Michael Coyle, Jr., P.E..

If you would like to nominate someone for Engineer of the Year please submit your nominations to John A Brogan, P.E. (retired): home phone 210-342-0586 or cell phone 210-289-9732, email: jabrogan@ieee.org or jabrogan@satx.rr.com. If you have any questions, please do not hesitate to contact John.

The schedule for nominations, nominee qualifications submittal and selection of the nominee is as follows:

- December 12, 2011 - Submit nominee's name and contact information (phone & email) to John A. Brogan P.E.(retired) (Contact information above) selection committee to contact nominee to request qualification information).
- December 31, 2011 -Candidate deadline to submit qualifications on the form to be forwarded to candidate by the selection committee
- January 10, 2012- Candidate Selection
- January 10, 2012 - Candidate Notification
- January 15, 2012 - Bexar Chapter February Newsletter article deadline - Candidate biographical information/resume due
- January 22, 2012- Bexar Chapter February Newsletter publication deadline
- February 19-25, 2012 - Engineers Week

NOVEMBER NEWSLETTER



Quick Take

Name: Juan Carlos Sanchez, P.E.
 Company: HNTB Corporation
 Job Title: Assistant Transportation
 Department Manager
 Hometown: Del Rio, Texas
 School: University of Texas San Antonio
 Degree: B.S. Civil Engineering

Why did you choose to become an engineer?

According to my mother, since I was a little boy I have been very inquisitive and like to pull things apart. I actually began my college career as a pre-med student in which I was learning the mechanics of the human body and ended up studying the mechanics of solids

What do you like most about your job?

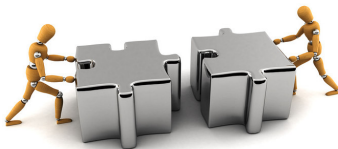
The thing I enjoy most about my job is the fact that since I am a people person I enjoy dealing and meeting people with different personalities and characters.

Any advice or tips you can give young engineers?

My advise to young engineers comes from a Confucius quote: "Choose a job you love, and you will never have to work a day in your life."

What is your favorite restaurant in San Antonio?

I don't really have one.



Sharpening Your Skills

| | | | | | | | | |
|---|---|---|---|---|---|---|---|---|
| 7 | | | | 3 | | | | |
| | 3 | 1 | 9 | 7 | | 6 | 8 | |
| | | 6 | | | 2 | | | 9 |
| | | | 8 | 6 | | | | 5 |
| | | | | | | 2 | 1 | |
| 4 | 5 | 9 | 7 | | | | | |
| 3 | | 8 | | | | 4 | | 6 |
| | | 2 | | 5 | 6 | | | |
| | 7 | | 1 | | | 3 | | |

Solutions can be found at the end of the newsletter

NOVEMBER NEWSLETTER

Announcement from the Editor...

Contribute to your chapter and community by submitting engineering related articles. Articles may be eligible for PDH time so hurry and submit yours. The **DECEMBER NEWSLETTER deadline** for receiving articles or advertisements is **November 16**. If you have any questions or comments please do not hesitate to contact me by email at bshelton@pape-dawson.com or by phone at (210) 375-9000.

Sincerely,
Brooke Shelton, E.I.T.

| Run Time | One Run | Two Runs | Three Runs | Nine Runs |
|---------------|---------|----------|------------|-----------|
| Business card | \$50 | \$75 | \$100 | \$200 |
| Half page ad | \$100 | \$150 | \$200 | N/A |
| Full page ad | \$200 | \$300 | \$400 | N/A |

“Post Your Advertisement Here”

Business Card, Half Page or Full Page
Please contact Brooke Shelton, E.I.T. for details

bshelton@pape-dawson.com

December Newsletter Deadline - NOVEMBER 16

| | | | | | | | | |
|---|---|---|---|---|---|---|---|---|
| 7 | 9 | 4 | 6 | 3 | 8 | 5 | 2 | 1 |
| 2 | 3 | 1 | 9 | 7 | 5 | 6 | 8 | 4 |
| 5 | 8 | 6 | 4 | 1 | 2 | 7 | 3 | 9 |
| 1 | 2 | 7 | 8 | 6 | 3 | 9 | 4 | 5 |
| 8 | 6 | 3 | 5 | 4 | 9 | 2 | 1 | 7 |
| 4 | 5 | 9 | 7 | 2 | 1 | 8 | 6 | 3 |
| 3 | 1 | 8 | 2 | 9 | 7 | 4 | 5 | 6 |
| 9 | 4 | 2 | 3 | 5 | 6 | 1 | 7 | 8 |
| 6 | 7 | 5 | 1 | 8 | 4 | 3 | 9 | 2 |

Solution from page 10

REMINDER
CHAPTER LUNCH MEETING
November 7
12:00 General Meeting
at Barn Door Restaurant



TSPE-Bexar Chapter
P.O. Box 790691
San Antonio, Texas 78279-0691